

Panels Catalogue



Welcome to our new and totally unique **Coventry Auto Components Panels Catalogue.**

The aim of this publication is to not only **simplify the way that panels are shown to you**, the end user, but also to **show the full and diverse range of panels** that are made or are available to us after 40 years in the XK-Parts business.

This catalogue is very much unique as our Director, Stuart MacNeill has also taken a great deal of time to include never before seen details of construction of the rare **XK120 Early**, coach-built vehicles (**Alloy Cars**), as well as including useful detail of fitting **non-standard parts** such as racing filler caps, **chassis and chassis modifications**, **shims** and also the **under chassis panels** and **floorboards** too.

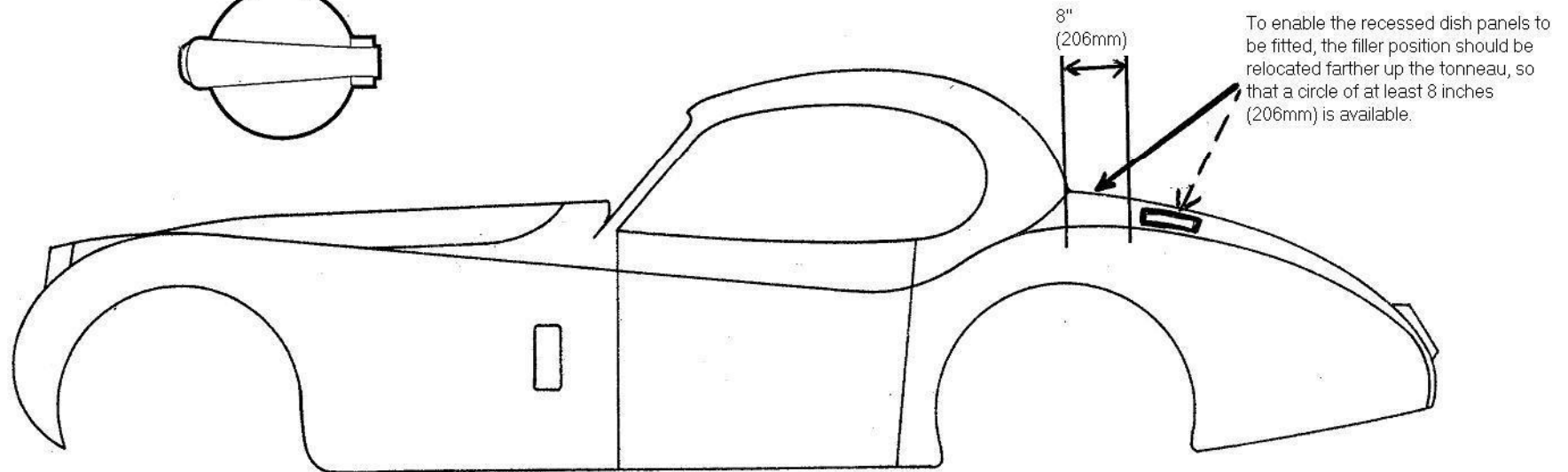
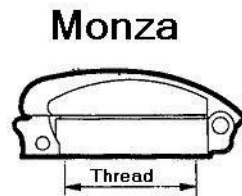
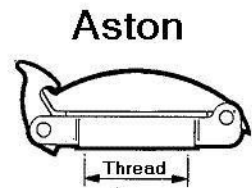
We even keep in stock the essential, rivet-on, **exhaust heatshields** that are **not listed as separate items in the Jaguar Parts Books!** This now allows you a far greater **over-view of the vehicle build** as a whole and also **makes you aware of 'non-panel' items** that are essential to **setting up your body correctly** onto the chassis.

We are also unique in offering a **two tier Panels Service**, for **fast supply** of panels you pay the **premium, V.O.R. price**, but if you have **no great rush**, then allowing us a few weeks longer will open up our **40 years established, network of smaller, highly skilled, independent panels suppliers**, that often can supply higher spec. or custom made, more specific panels for your needs **at more cost-effective prices.**

We like to call this our **Pre-Order system.**

Please contact us for prices, as we can probably save you more money than you expect!

We can also supply items such as FHC roof sections, but often can obtain original body sections, so have not included pictures of these. Please enquire.



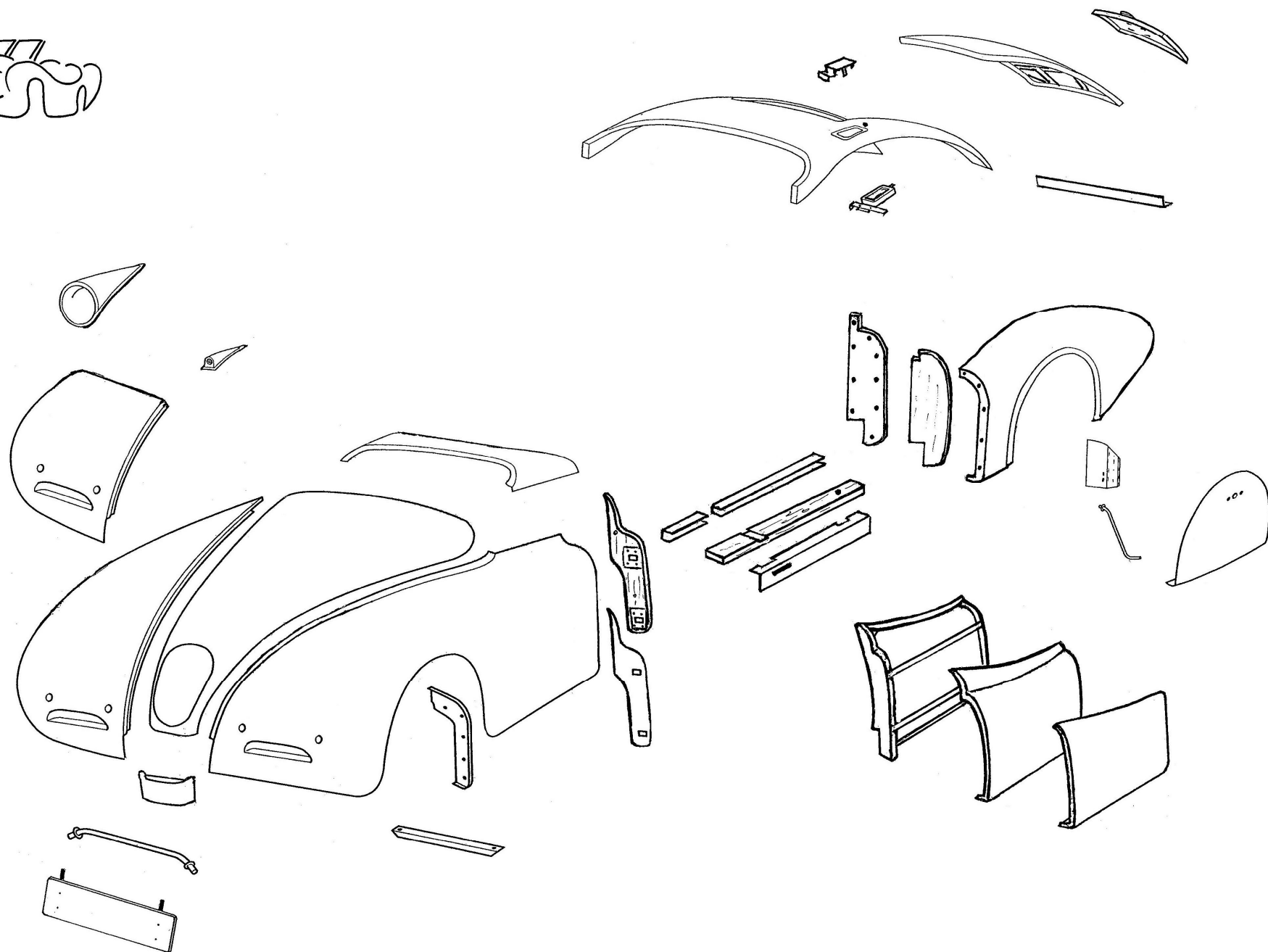
If the panel is curved, the dish will have to be reworked to the body shape.

This type of filler is normally fitted with a recessed steel 'dish' panel and matching aluminium 'dish' finisher.

A key-locking version is also available for inside the neck once the cap is flipped.

For fitment of 3 1/2 BSP Aston Filler Cap

Tel : 00-44-(0)2476-471217 Fax : 00-44-(0)2476-421123 Email : sales@xkparts.co.uk

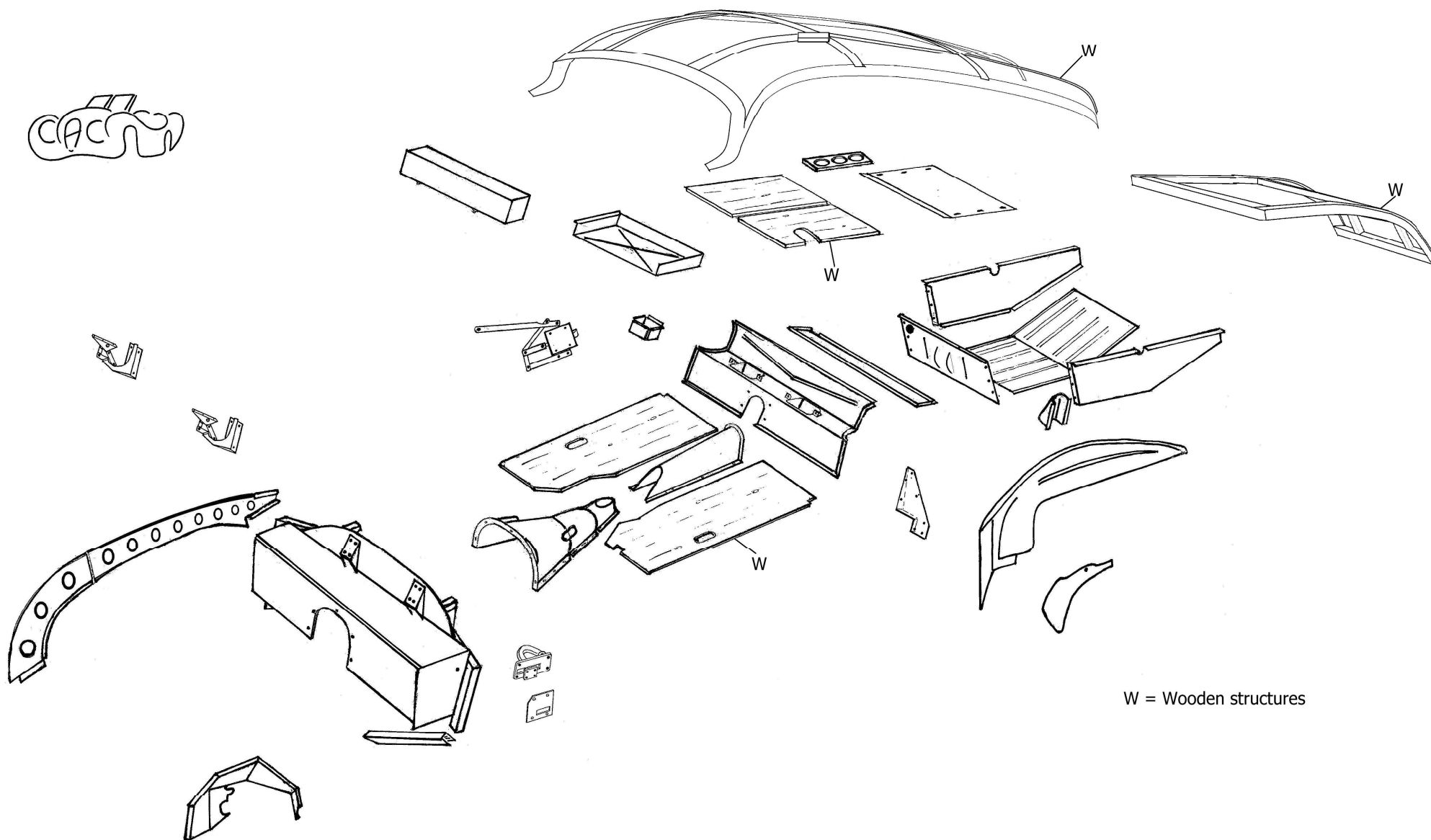


Early XK120 Alloy Construction

Tel : 00-44-(0)2476-471217

Fax : 00-44-(0)2476-421123

Email : sales@xkparts.co.uk

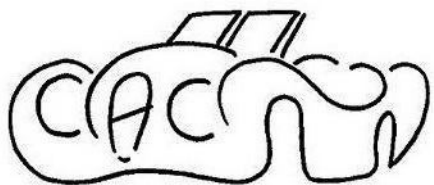


Early XK120 Alloy Car Construction

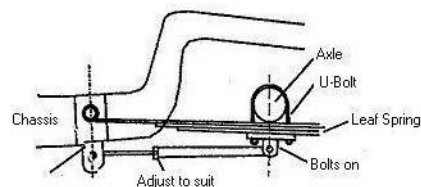
Tel : 00-44-(0)2476-471217

Fax : 00-44-(0)2476-421123

Email : sales@xkparts.co.uk

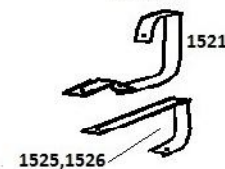


SE408 Rear axle 'anti-tramp' torsion arms.
Braces leaf spring to chassis preventing
axle twist (requires some welding)



Later Chassis

Bumper Bars
To chassis



XK120 Rear shock absorber
conversion mount kit.

To replace rear lever
arms including 4 long
U-bolts.

Top mount welds
into XK120 chassis

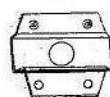


Bottom mount
under leaf spring.
Note uprated nut
fastening for shock

Note: Top mount
requires welding
into chassis.



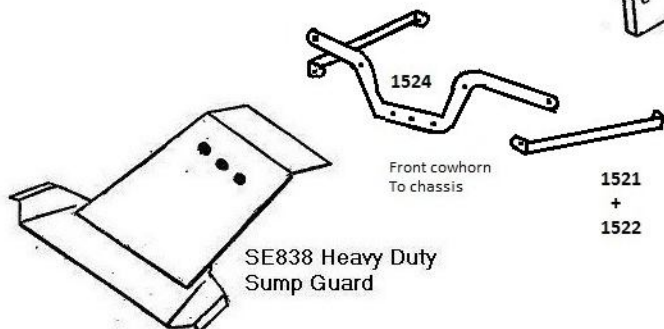
SE427 Conversion
Plates to fit
XK140 / XK150 Steering
Rack and Pinion.



1521
+
1522

Front cowhorn
To chassis

SE838 Heavy Duty
Sump Guard

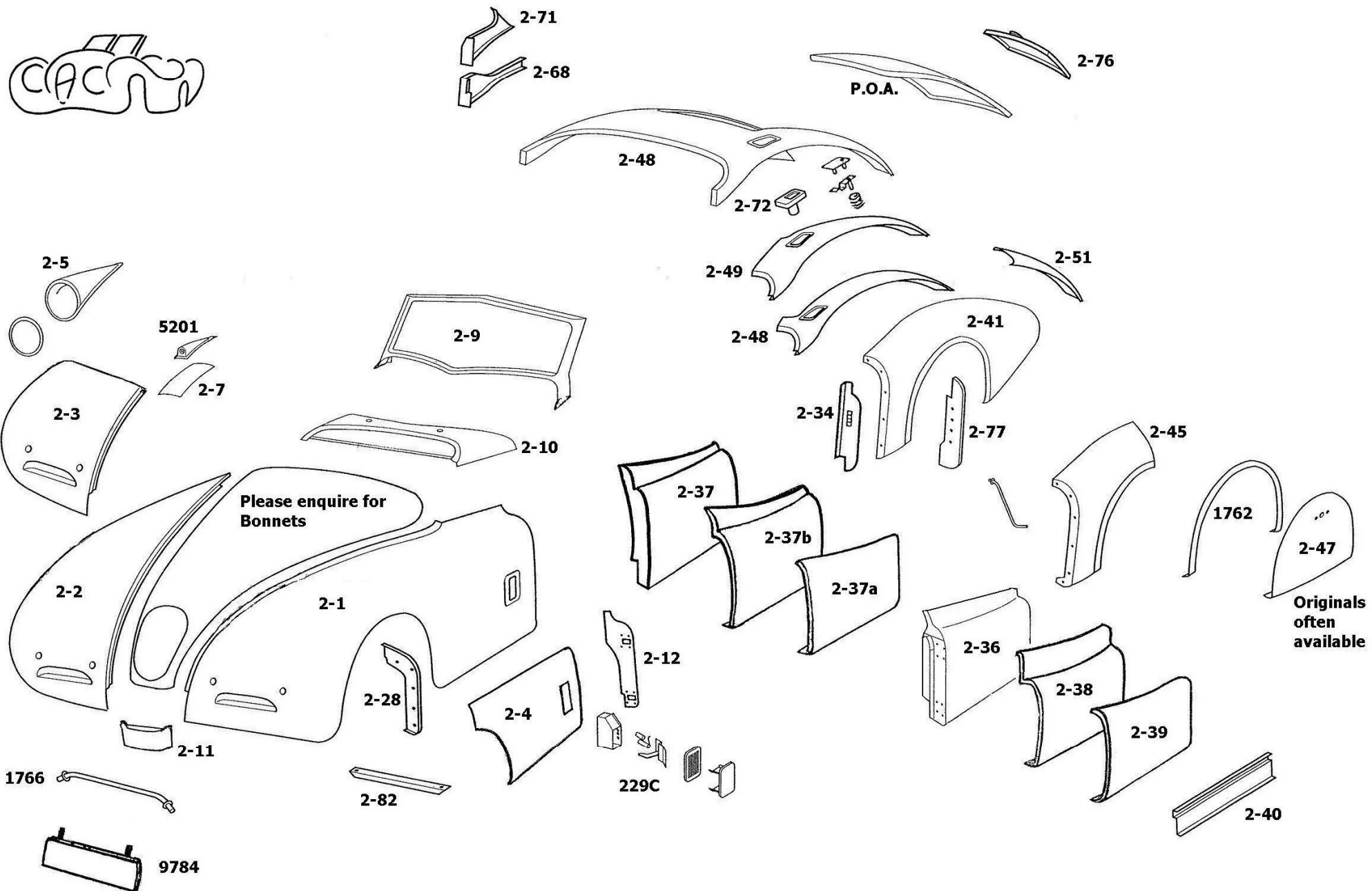


XK120 Chassis

Tel : 00-44-(0)2476-471217

Fax : 00-44-(0)2476-421123

Email : sales@xkparts.co.uk

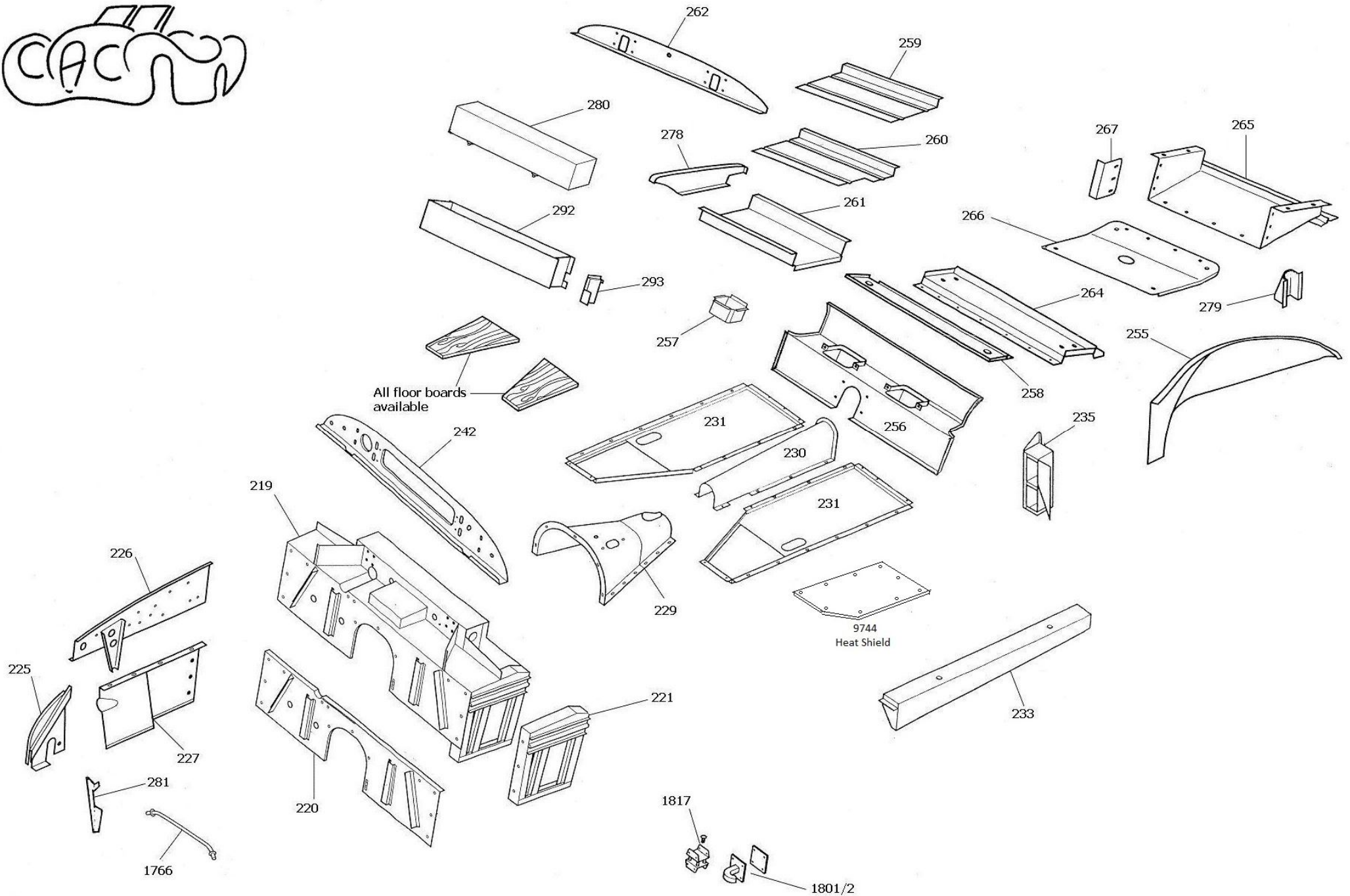
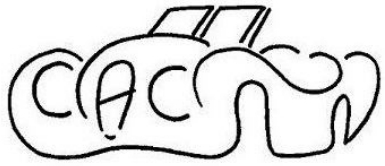


XK120 Exterior Panels

Tel : 00-44-(0)2476-471217

Fax : 00-44-(0)2476-421123

Email : sales@xkparts.co.uk



XK120 Interior Panels

Tel : 00-44-(0)2476-471217

Fax : 00-44-(0)2476-421123

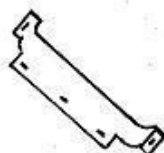
Email : sales@xkparts.co.uk



4561 Round radiator fan cowl



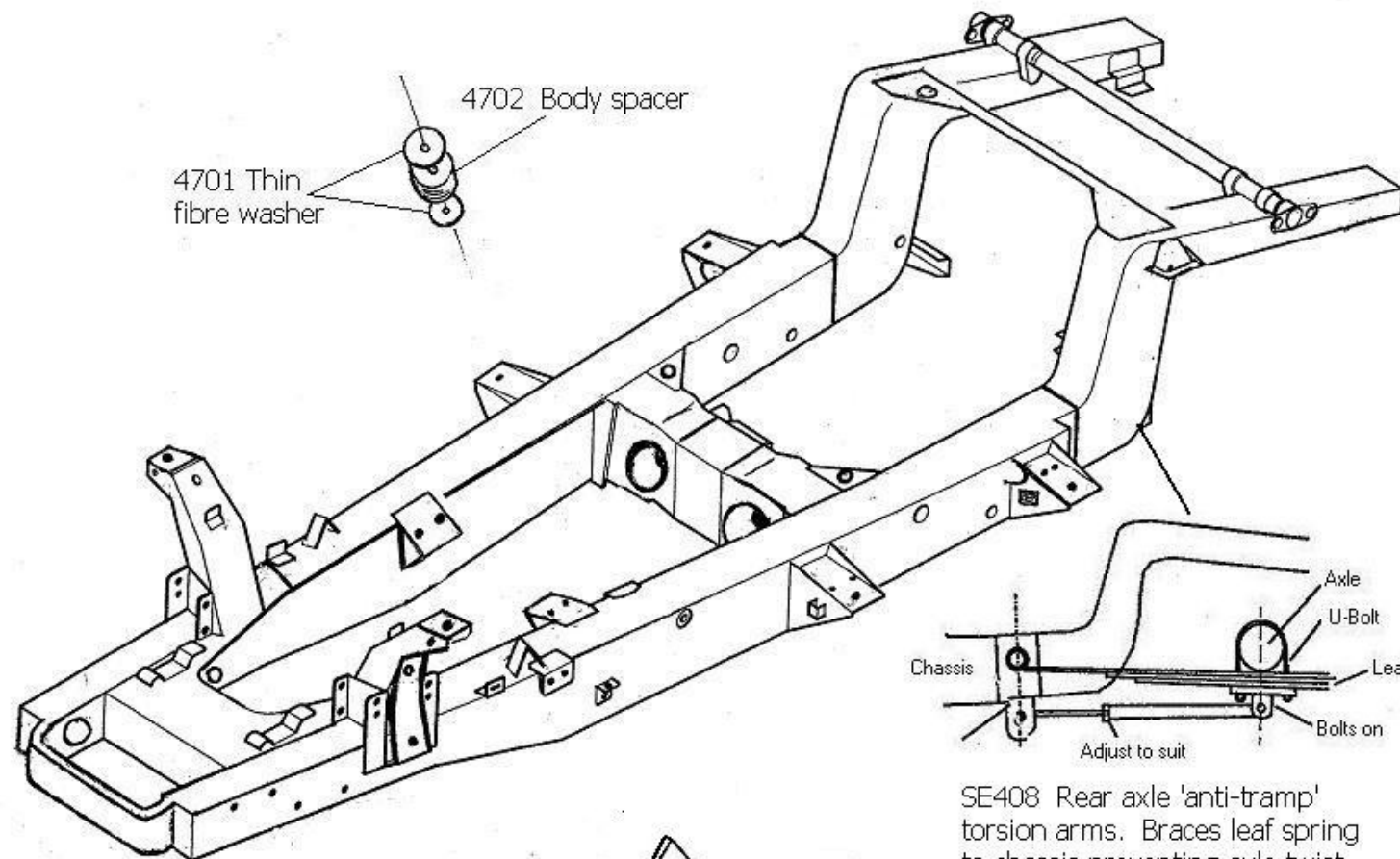
4558 Lower radiator pipe shield



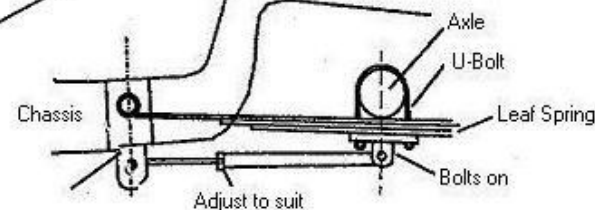
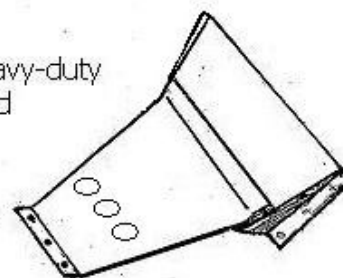
4701 Thin fibre washer



4702 Body spacer



SE838 Heavy-duty sump guard



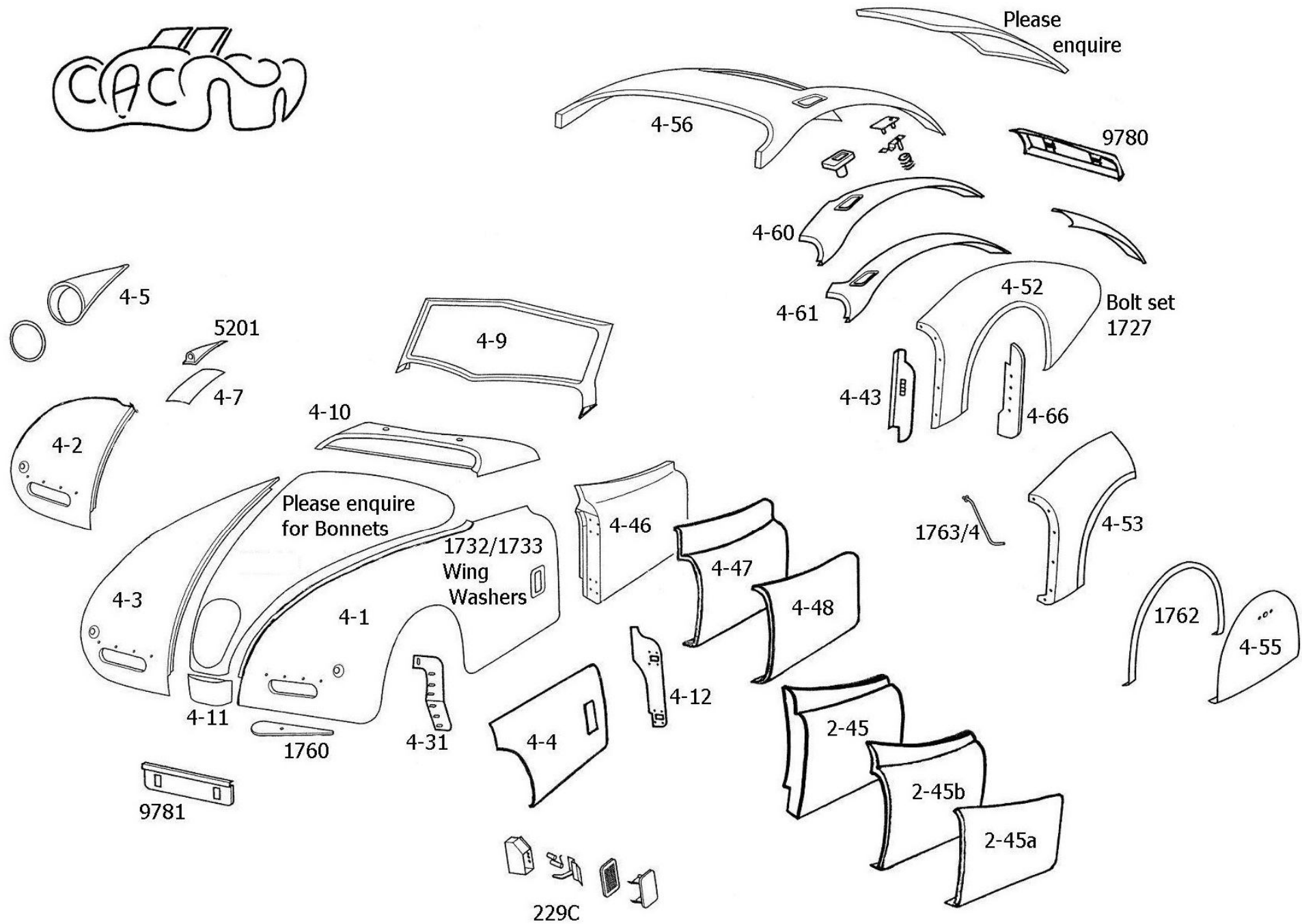
SE408 Rear axle 'anti-tramp' torsion arms. Braces leaf spring to chassis preventing axle twist (requires some welding)

XK140 Chassis

Tel : 00-44-(0)2476 471217

Fax : 00-44-(0)2476-421123

Email : sales@xkparts.co.uk

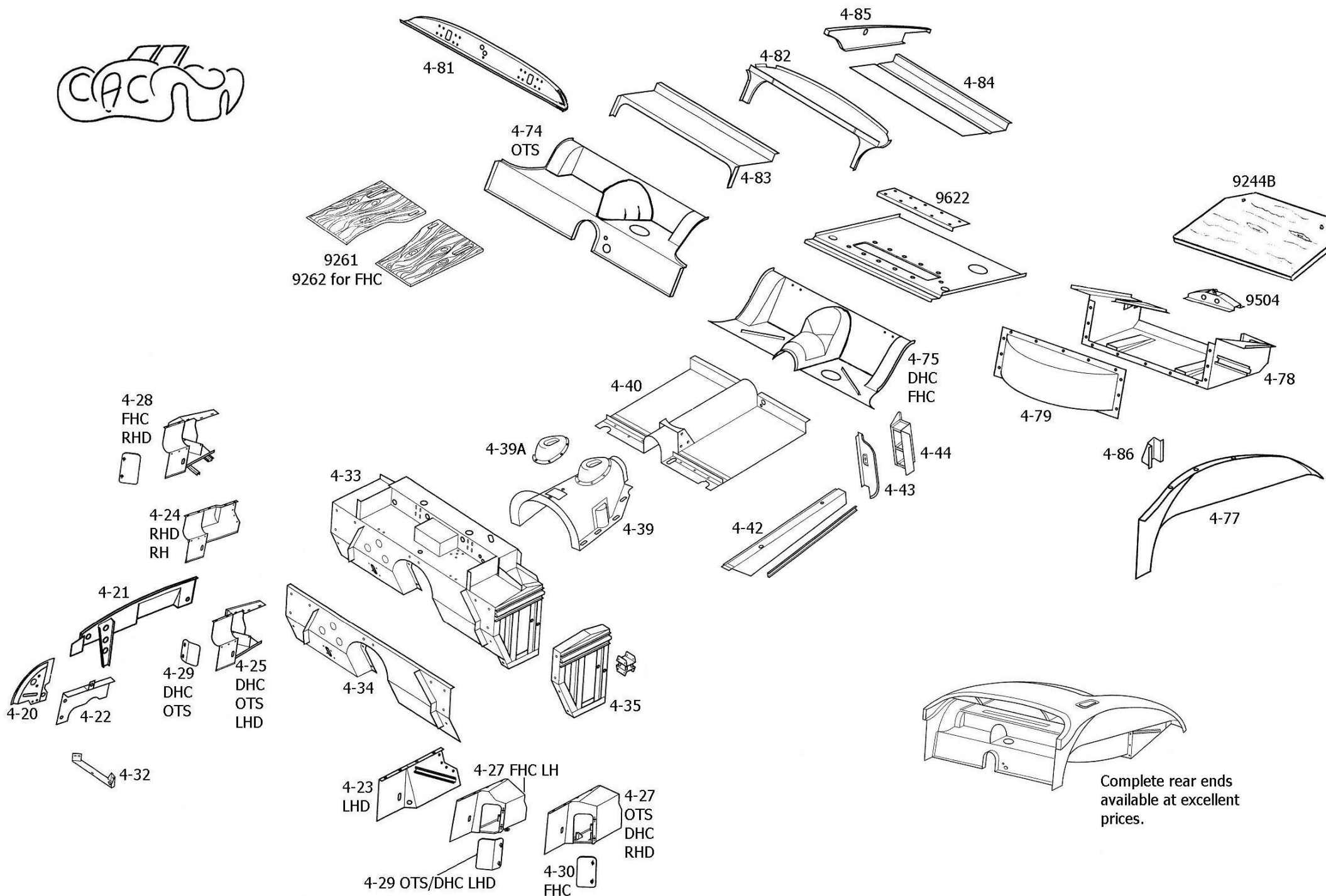


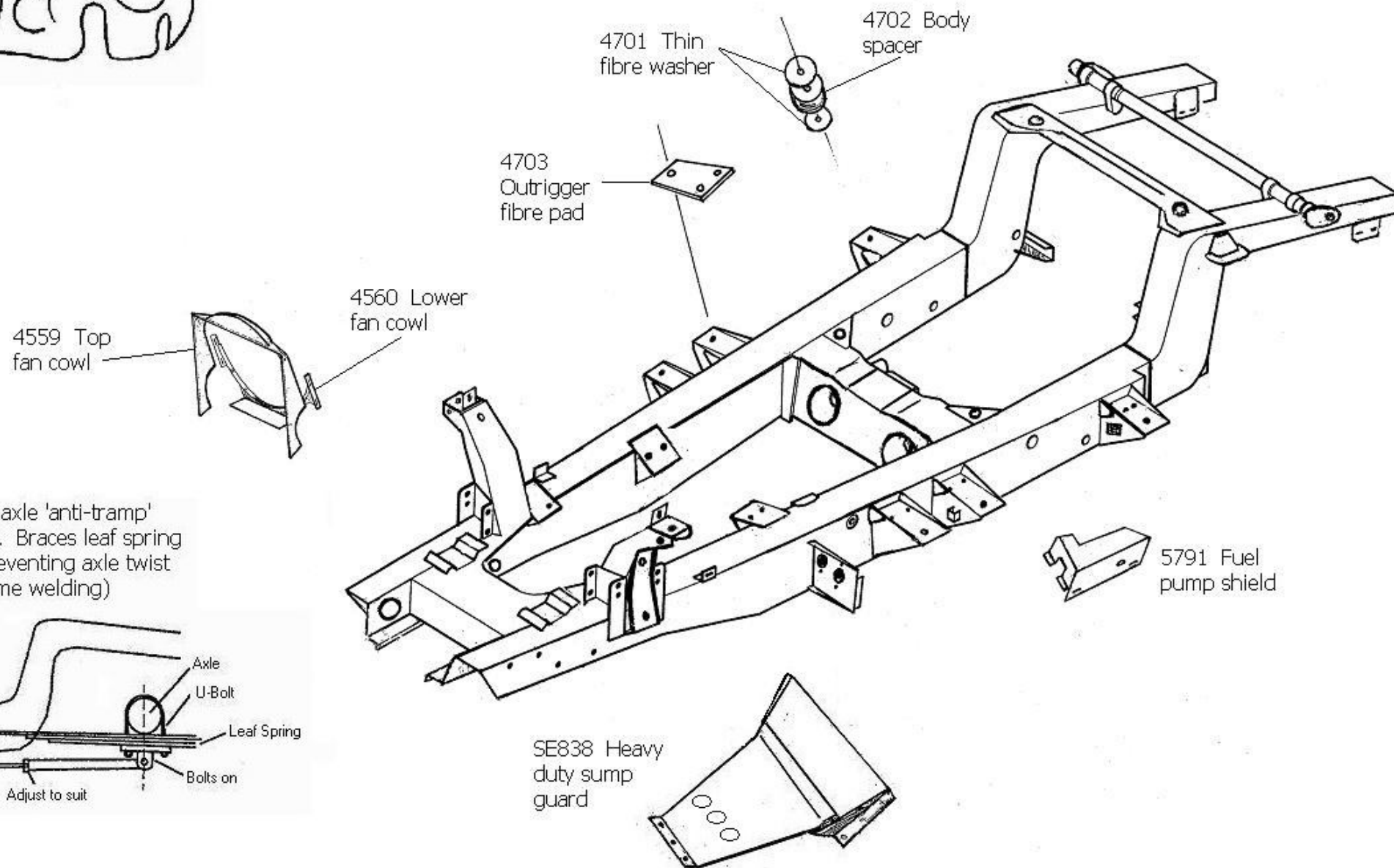
XK140 Exterior Panels

Tel : 00-44-(0)2476-471217

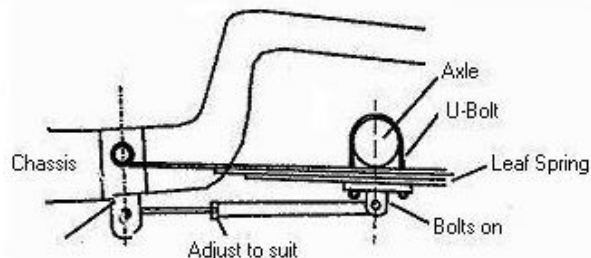
Fax : 00-44-(0)2476-421123

Email : sales@xkparts.co.uk





SE408 Rear axle 'anti-tramp' torsion arms. Braces leaf spring to chassis preventing axle twist (requires some welding)

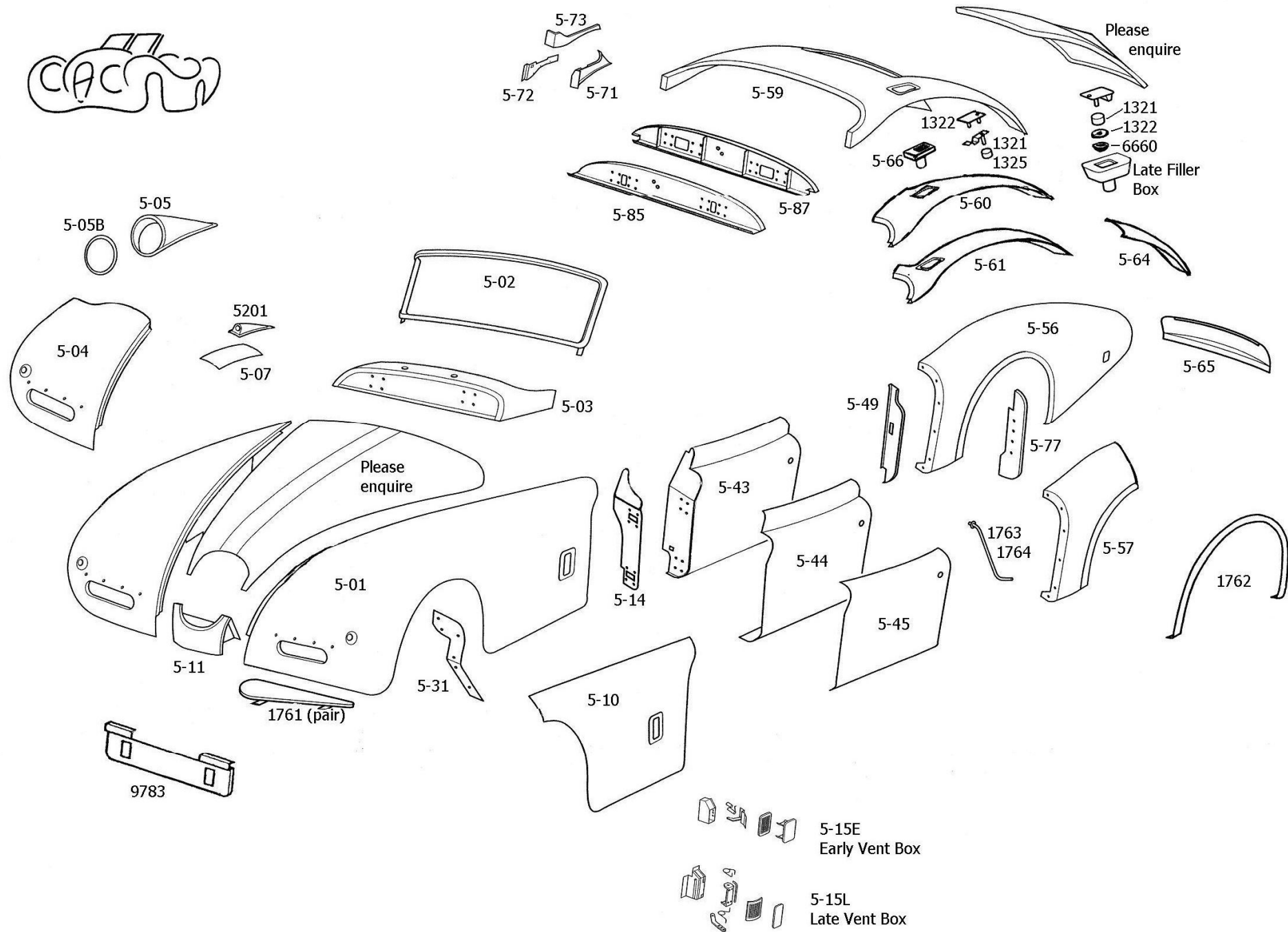


XK150 Chassis

Tel : 00-44-(0)2476 471217

Fax : 00-44-(0)2476-421123

Email : sales@xkparts.co.uk

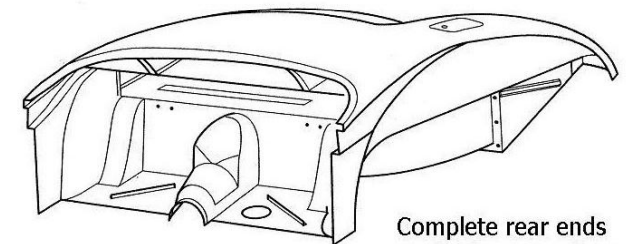
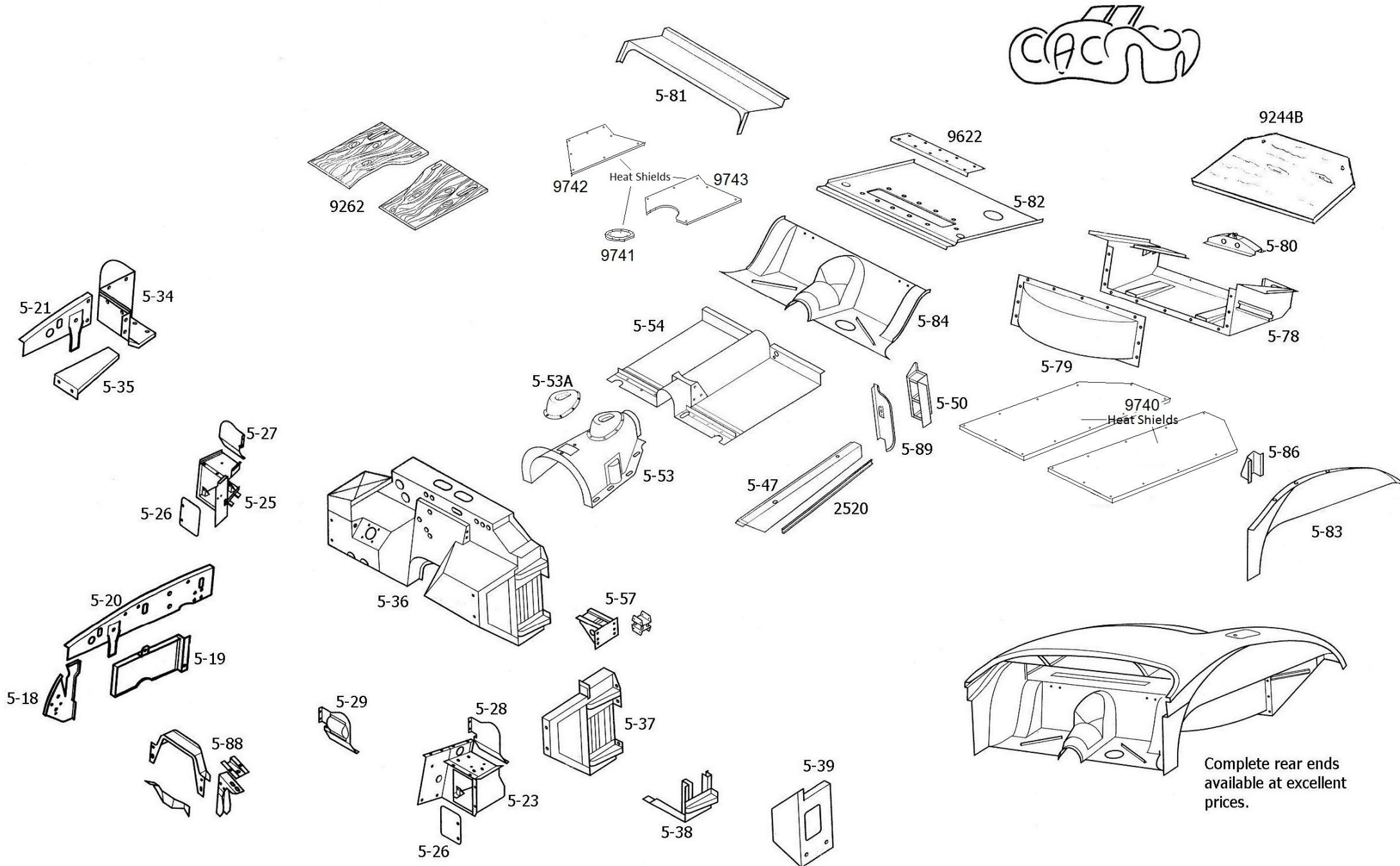


XK150 Exterior Panels

Tel : 00-44-(0)2476-471217

Fax : 00-44-(0)2476-421123

Email : sales@xkparts.co.uk









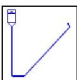












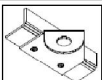

Complete rear ends
available at excellent
prices.

XK150 Interior Panels

Tel : 00-44-(0)2476-471217

Fax : 00-44-(0)2476-421123

Email : sales@xkparts.co.uk

Picture	Part Number	Description	Picture	Part Number	Description
	1520	Front Bumper Spring		5751	XK 140 DHC/OTS Fuse Box Cover
	1764 / 1765	Wing Stays		5752	XK150 Relay Box Cover
	1766	XK120 Wing Stay Across Radiator		9650	XK 150 Bonnet Stay (667 mm)
	4403	XK Exhaust Hanger		9658	XK 140 Bonnet Stay (687 mm)
	5142	XK 140 FHC Fuse Box Cover		9659	XK 120 Bonnet Stay (653 mm)
	5201	Sidelight Pod		9660	X150 Boot Stay (Medium, 23 3/4")
	5272	XK 140 & 150 Fog Lamp Bracket		9664	XK 140 DHC/OTS Bonnet Stay (895 mm)
	5302	XK150 Fuse Box Cover for 10-way connector		9670	X120 Boot Stay (Short, 22") includes bracket.
	5750	XK150 Fuse Box Cover		9672	X140 Boot Stay (Long, 25 3/4") includes bracket.
	5750A	XK150 Fuse Box Cover		9660A	Boot Stay Bracket Assembly
	SE838	Heavy Duty Aluminium Sump Guard			